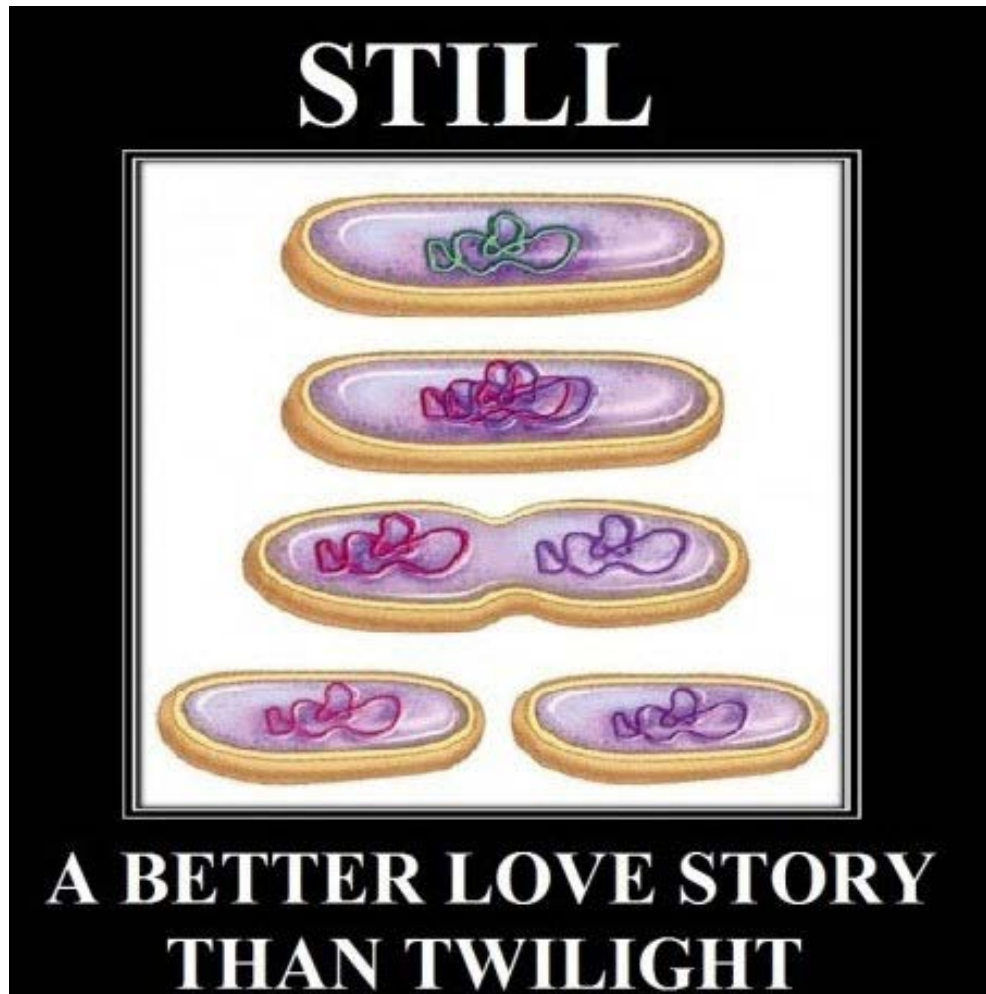


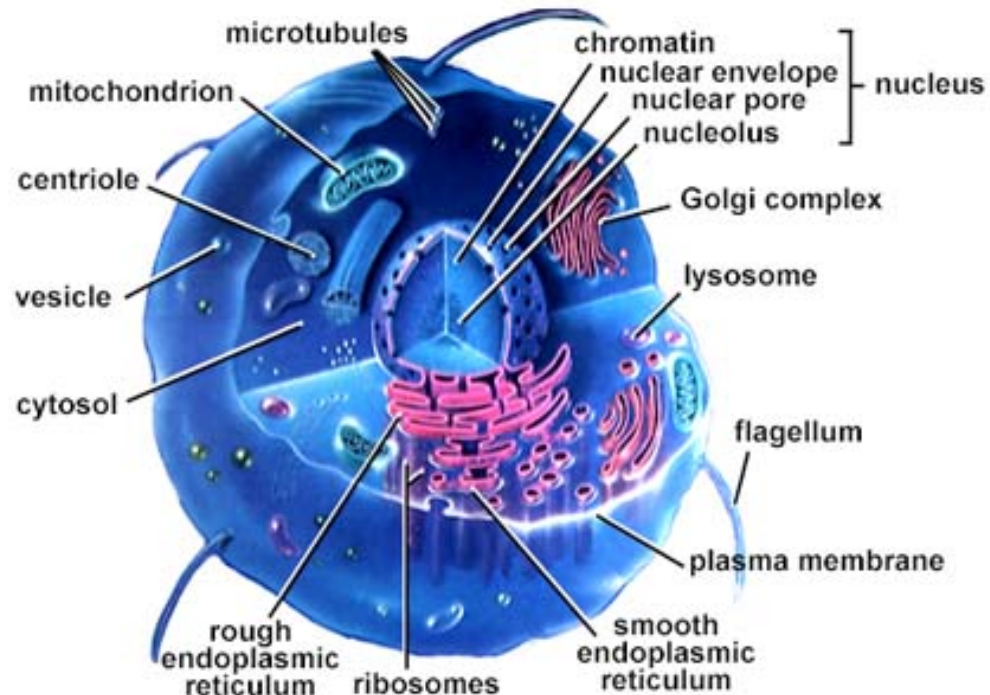
Reproduction Introduction



Reproduction Intro...

Cell Theory:

- All living **ORGANISMS** are composed of one or more **CELLS**.
- **CELLS** are the basic unit of **STRUCTURE** and **FUNCTION** in all living organisms.
- All **CELLS** come from **PREVIOUSLY EXISTING** cells.
- The activity of an entire organism depends on the total activity of its **INDEPENDENT** cells.



The Cell...

The Cell – The basic unit of life

Each cell contains numerous membrane-bound **ORGANELLES**, which are specialized structures that perform specific functions in the cell.

These are the parts of the cell that we should know about:

Nucleus

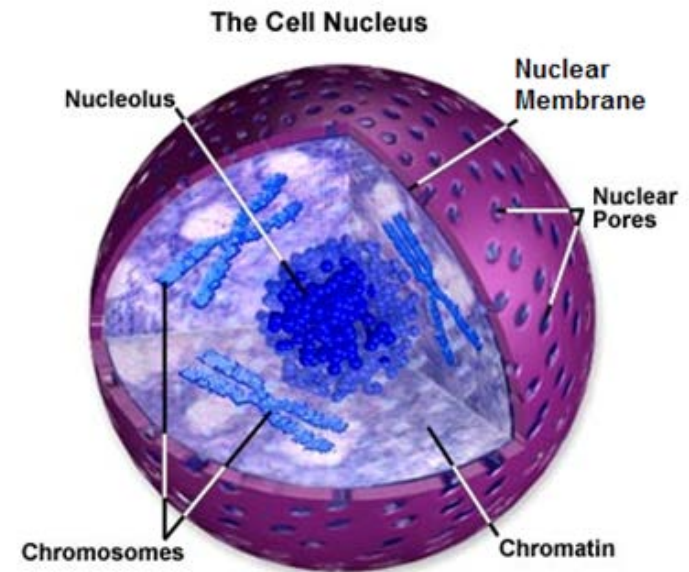
- The organelle that contains **DNA**.
- Controls all cell **FUNCTIONS** and **GROWTH**.

Nuclear Membrane

- The membrane which **OUTLINES** the nucleus.

DNA (Deoxyribonucleic Acid)

- Contains the **GENETIC CODE** for the cell.



The Cell...

Chromosome

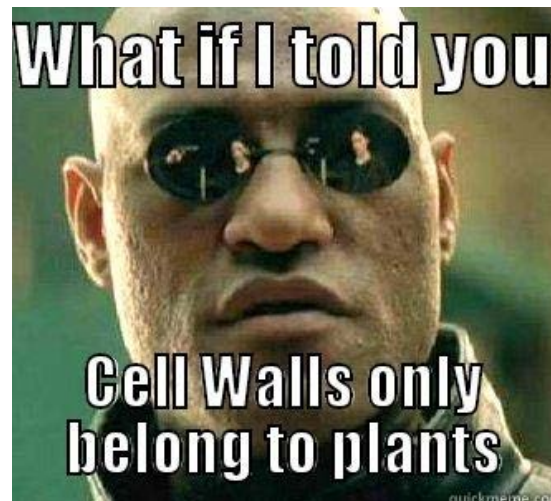
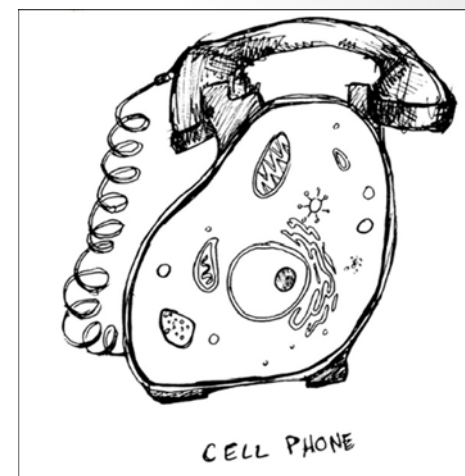
- Made of DNA. Consists of many GENES.

Cell Membrane

- SEPARATES the contents of the cell from its surroundings, controls the MOVEMENT of materials in and out of the cell.

Cell Wall

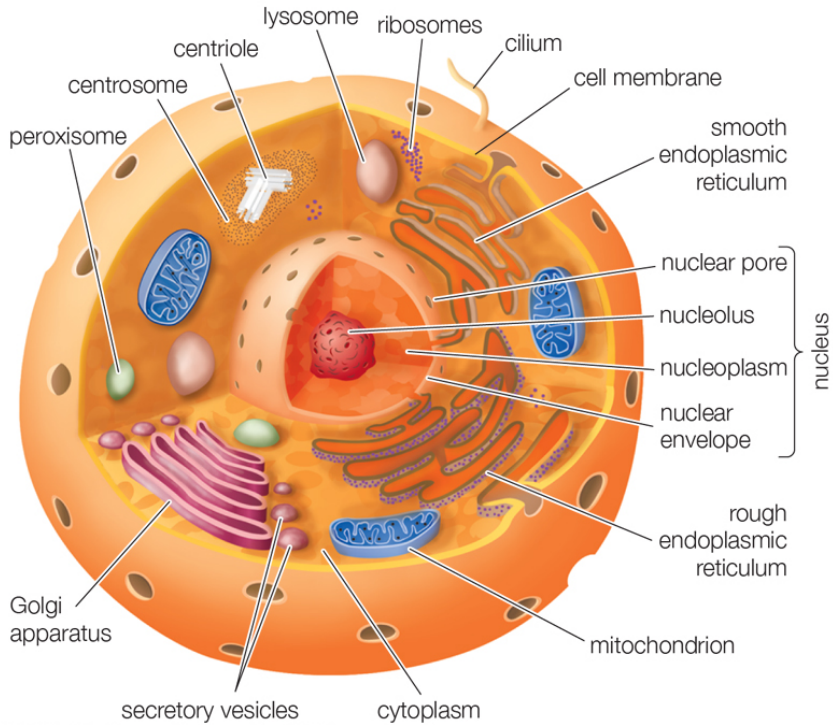
- A RIGID BARRIER which lies outside of the cell MEMBRANE of PLANTS, FUNGI and BACTERIA. Used for STRUCTURE (Gives shape to organism).



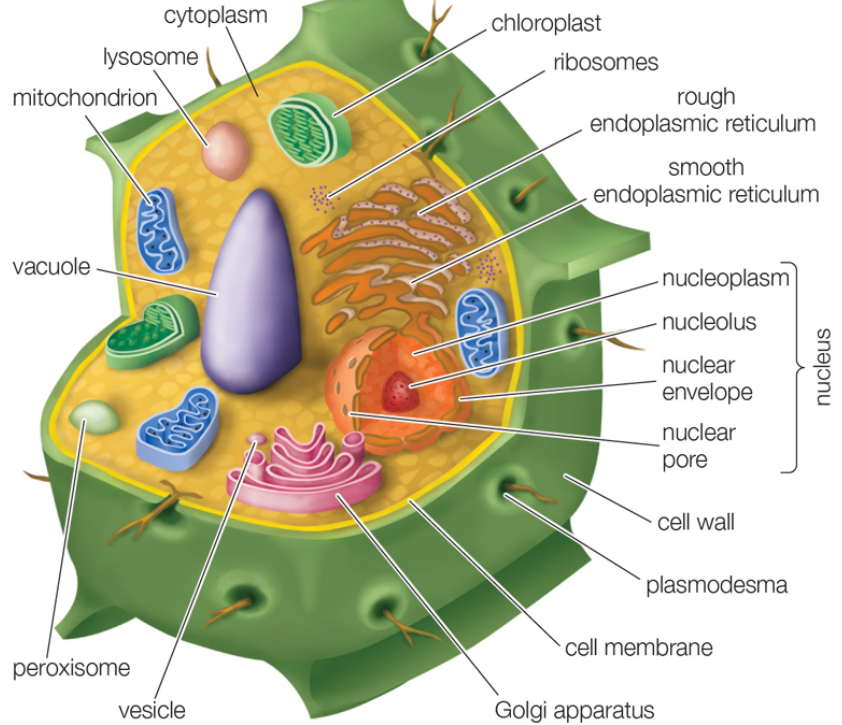
The Cell...

Typical animal cell and plant cell

Animal cell



Plant cell



The Cell...

Defining Characteristics of an Animal Cell:

- Contains a CELL MEMBRANE ONLY
- Contains CENTRIOLES
 - used in MITOSIS (cellular reproduction)

Defining Characteristics of a Plant Cell:

- Contains a CELL WALL
- Contains CHLOROPLASTS (Photosynthesis)

